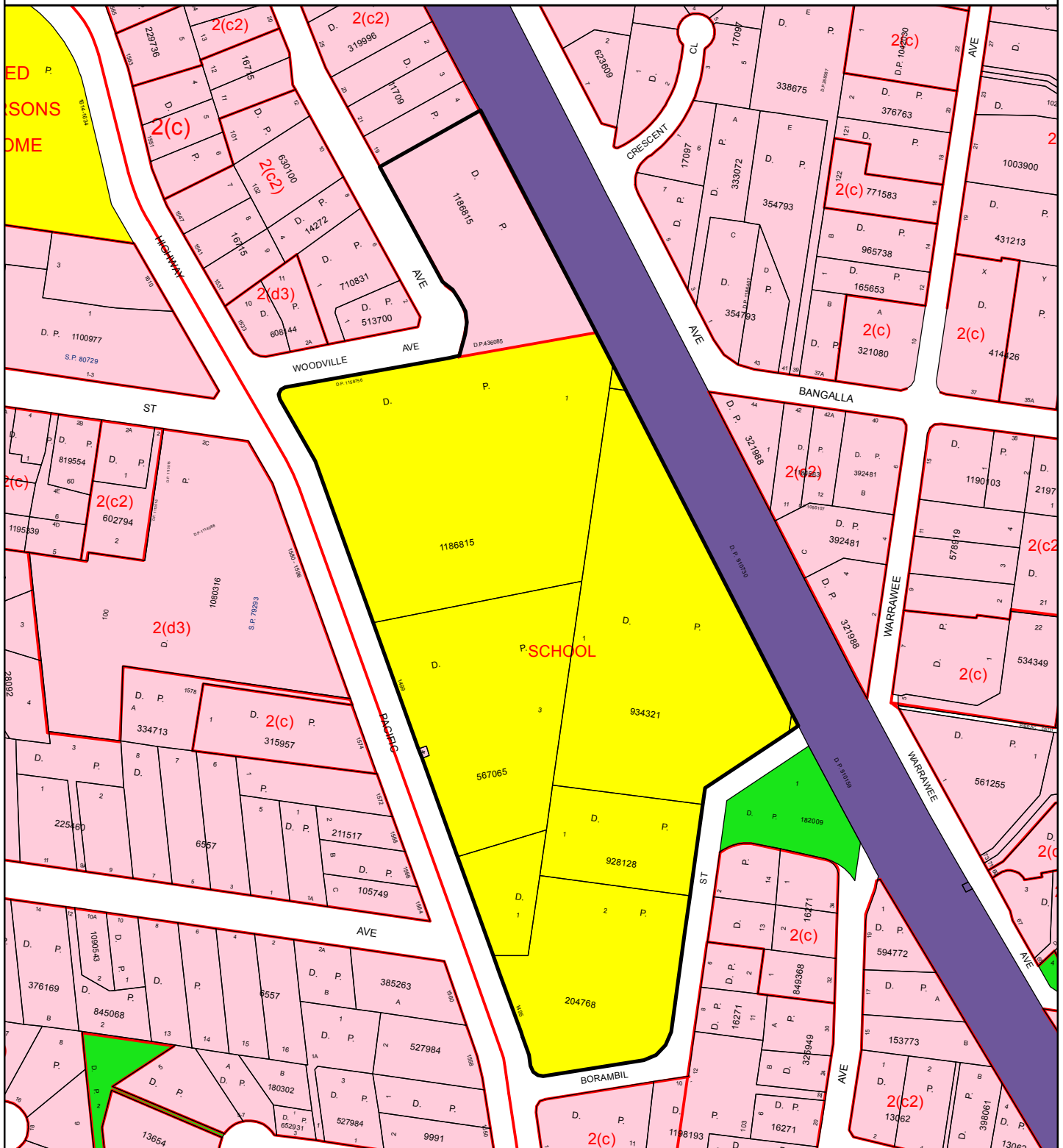


Ku-ring-gai Planning Scheme Zoning Extract

11-17 Woodville Avenue and 1495-1499 Pacific Highway Wahroonga - DA0020/15



ZONES

2. RESIDENTIAL

- (a) RESIDENTIAL A
- (b) RESIDENTIAL B
- (c) RESIDENTIAL C
- (c1) RESIDENTIAL C1
- (c2) RESIDENTIAL C2
- (d) RESIDENTIAL D
- (d3) RESIDENTIAL D3
- (e) RESIDENTIAL E
- (f) RESIDENTIAL F
- (g) RESIDENTIAL G
- (h) RESIDENTIAL H

3. BUSINESS

- (a) RETAIL SERVICES
- FLOOR SPACE RATIOS
 - A1 2.0:1
 - A2 1.0:1
 - A3 0.75:1
- (b) COMMERCIAL SERVICES
- FLOOR SPACE RATIOS
 - B1 1.0:1
 - B2 1.0:1

5. SPECIAL USES

- (a) SPECIAL USES A (Schools etc)
- (a1) SPECIAL USES A1
- (b) SPECIAL USES (Railway)

6. OPEN SPACE

- (a) RECREATION EXISTING
- (b) RECREATION PRIVATE
- (c) RECREATION PROPOSED

RESERVATIONS

OPEN SPACE

- (a) OPEN SPACE
- (b) COUNTY OPEN SPACE

SPECIAL USES

SPECIAL USES (Parking etc)

ROADS

- (a) COUNTY ROAD WIDENING
- (b) COUNTY ROAD PROPOSED
- (c) LOCAL ROAD PROPOSED
- (d) LOCAL ROAD WIDENING

GENERAL

OTHER

- EXISTING COUNTY ROAD
- OTHER PLANNING INSTRUMENTS



Scale :
1:3000

Date: 24/04/2015

